

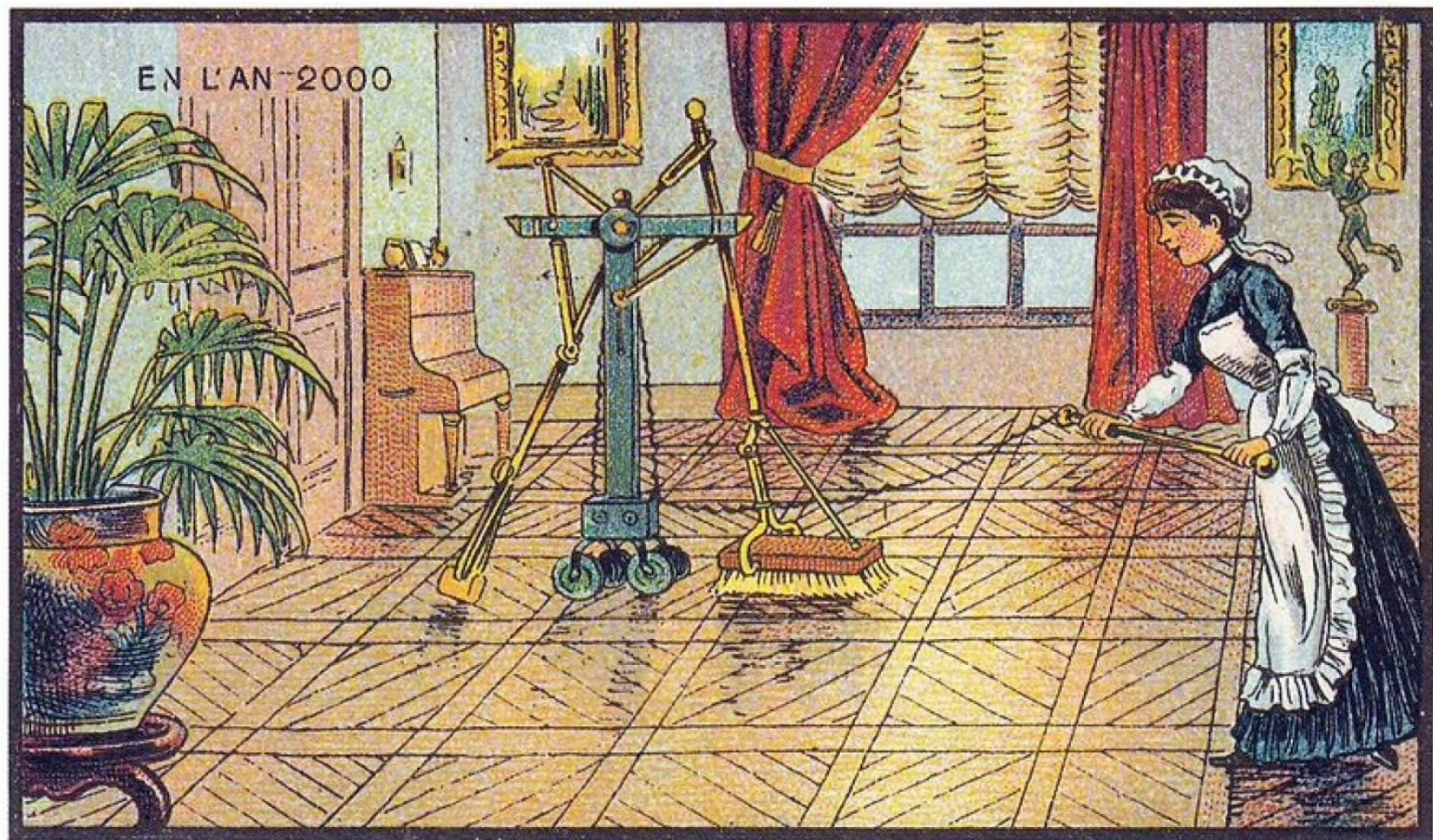
A photograph of a red brick building with a yellow door, a bicycle, and a text overlay. The door is yellow with a six-pane window and a brass handle. A black lantern-style light fixture is mounted on the wall to the left of the door. A brass mailbox is mounted on the wall to the right of the door. A white bicycle with a black seat and handlebars is parked against the wall. A blue gas meter and pipes are visible on the right side of the wall. The text overlay is in the top right corner.

Min digitale bolig

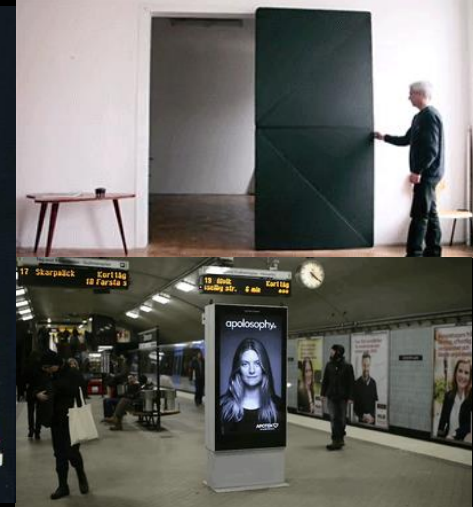
– Når byggeri forstår mennesker

Kim Escherich | @kescherich
Executive Innovation Architect
IBM Global Business Services

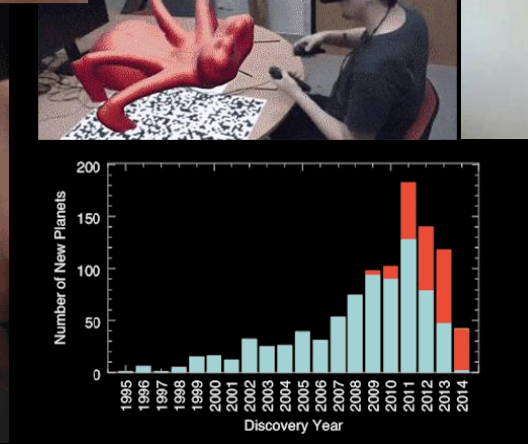
- 1. Hvor er teknologien på vej hen?**
2. Hvad kan vi lære af bygningen?
3. Hvordan bliver hjemmet smart?



Electric Scrubbing



Camera stabilizing tech
used in spoon for
Parkinson's



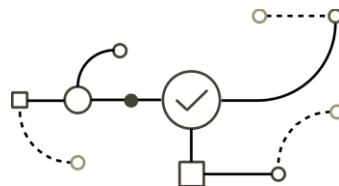
cog-ni-tive

\ˈkäg-nə-tiv\



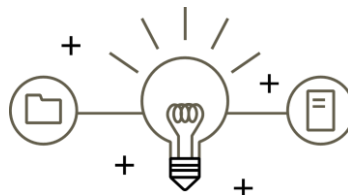
Understand

Like humans do



Reason

to extract ideas



Learn

From past results



Interact

In a natural way

A woman with blonde hair, seen from the back, is wearing a white, strapless, floor-length gown adorned with large, three-dimensional white flowers. She is standing on a red carpet that runs up a set of white stone steps. In the background, a dense crowd of photographers in black suits is holding up cameras and flashes, capturing the moment. The scene is set against a backdrop of green hedges and a white wall.

**Cognitive
Marchesa
dress**

24378 words analyzed: **Very Strong Analysis**

You are a bit critical and excitable.

You are adventurous: you are eager to experience new things. You are authority-challenging: you prefer to challenge authority and traditional values to help bring about positive changes. And you are self-controlled: you have control over your desires, which are not particularly intense.

You are motivated to seek out experiences that provide a strong feeling of efficiency.

You are relatively unconcerned with both tradition and taking pleasure in life. You care more about making your own path than following what others have done. And you prefer activities with a purpose greater than just personal enjoyment.

How did we get this?

- ✔ be sensitive to ownership cost when buying automobiles

- ✓ have experience playing music

☒ like historical movies

- ⊗ be influenced by social media during product purchases

⊗ prefer style when buying clothes

- ⊗ be influenced by brand name when making product purchases



Emotional range ▾



Openness ▾



Introversion/Extraversion ▾



Conscientiousness ▾



Agreeableness ▾



*% = percentile

Practicality



Curiosity



Liberty



Structure



Love



*% = percentile

Stimulation



Achievement



Helping others



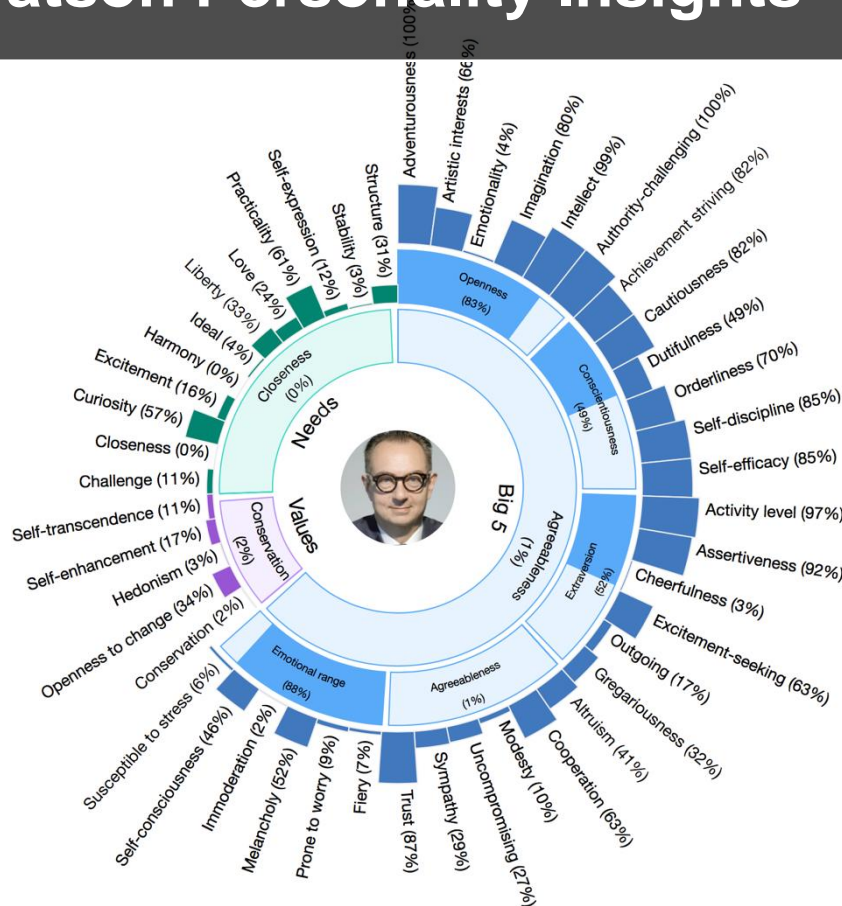
Taking pleasure in life



Tradition



Watson Personality Insights





**CONNIE, HILTON WATSON
CONCIERGE**

“Alexa, turn on
Welcome Home”

“Alexa, turn on my
Chill Time”



“Alexa, turn off my
Bedroom Sonos”

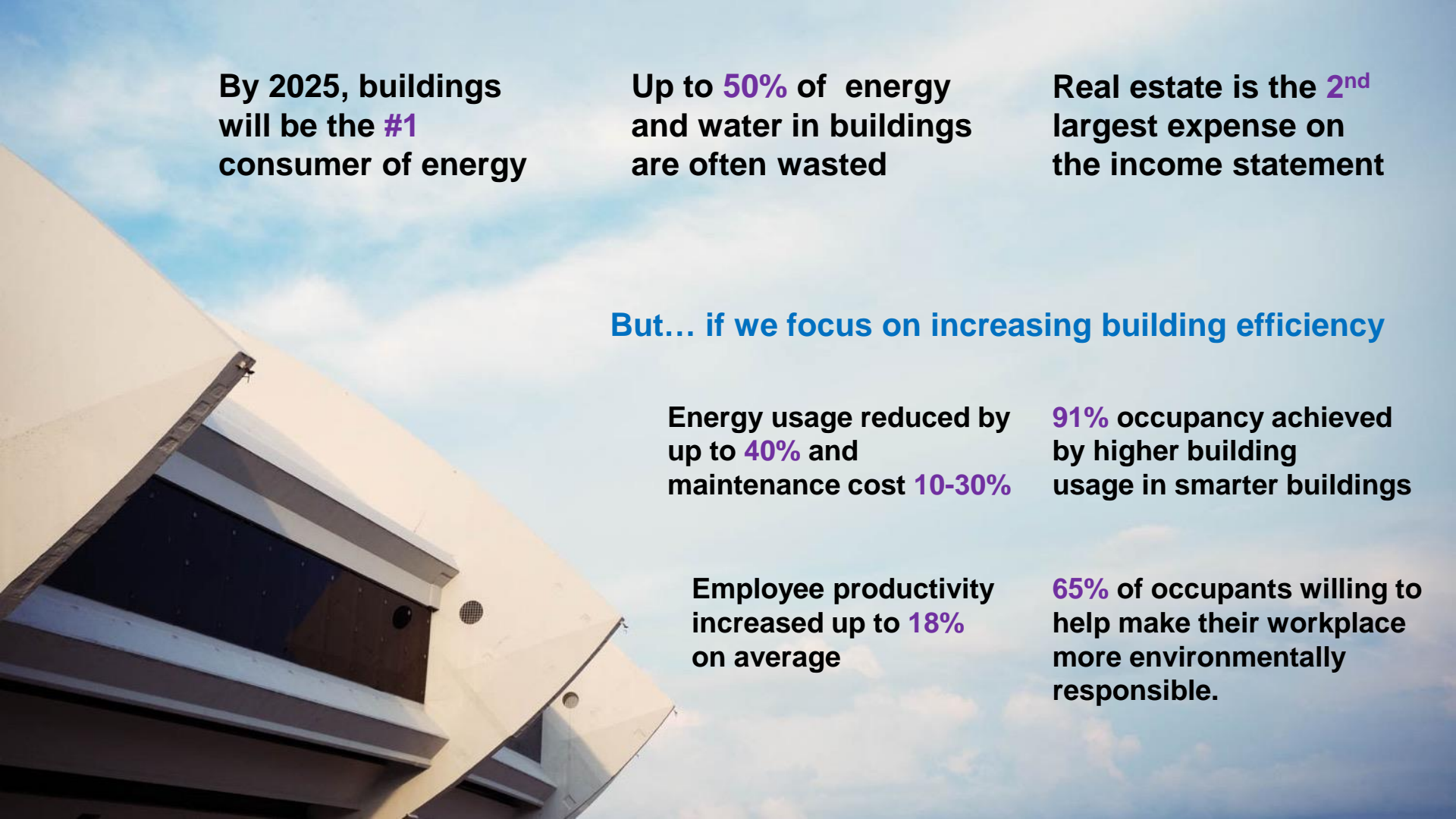
“Alexa, turn on
the TV”



A collision of Chinese manufacturing, globalization, and consumer ignorance could ruin the internet for everyone



1. Hvor er teknologien på vej hen?
- 2. Hvad kan vi lære af bygningen?**
3. Hvordan bliver hjemmet smart?



By 2025, buildings
will be the **#1**
consumer of energy

Up to **50%** of energy
and water in buildings
are often wasted

Real estate is the **2nd**
largest expense on
the income statement

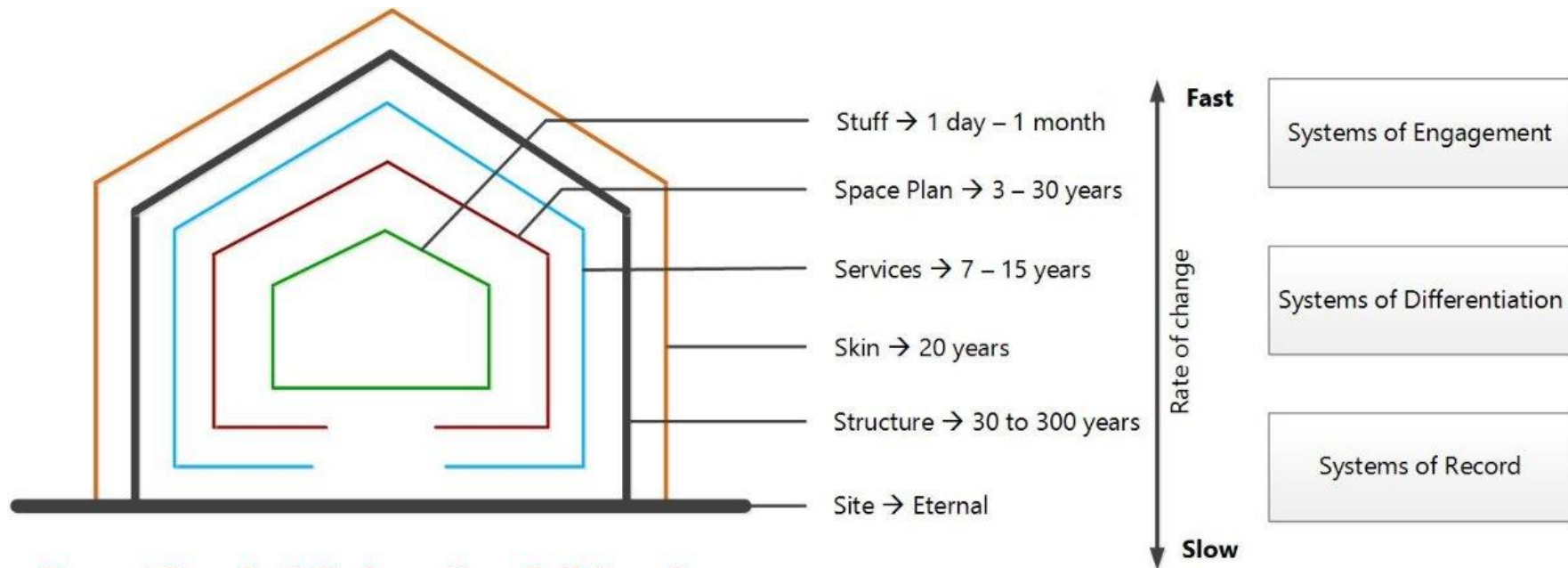
But... if we focus on increasing building efficiency

Energy usage reduced by
up to **40%** and
maintenance cost **10-30%**

91% occupancy achieved
by higher building
usage in smarter buildings

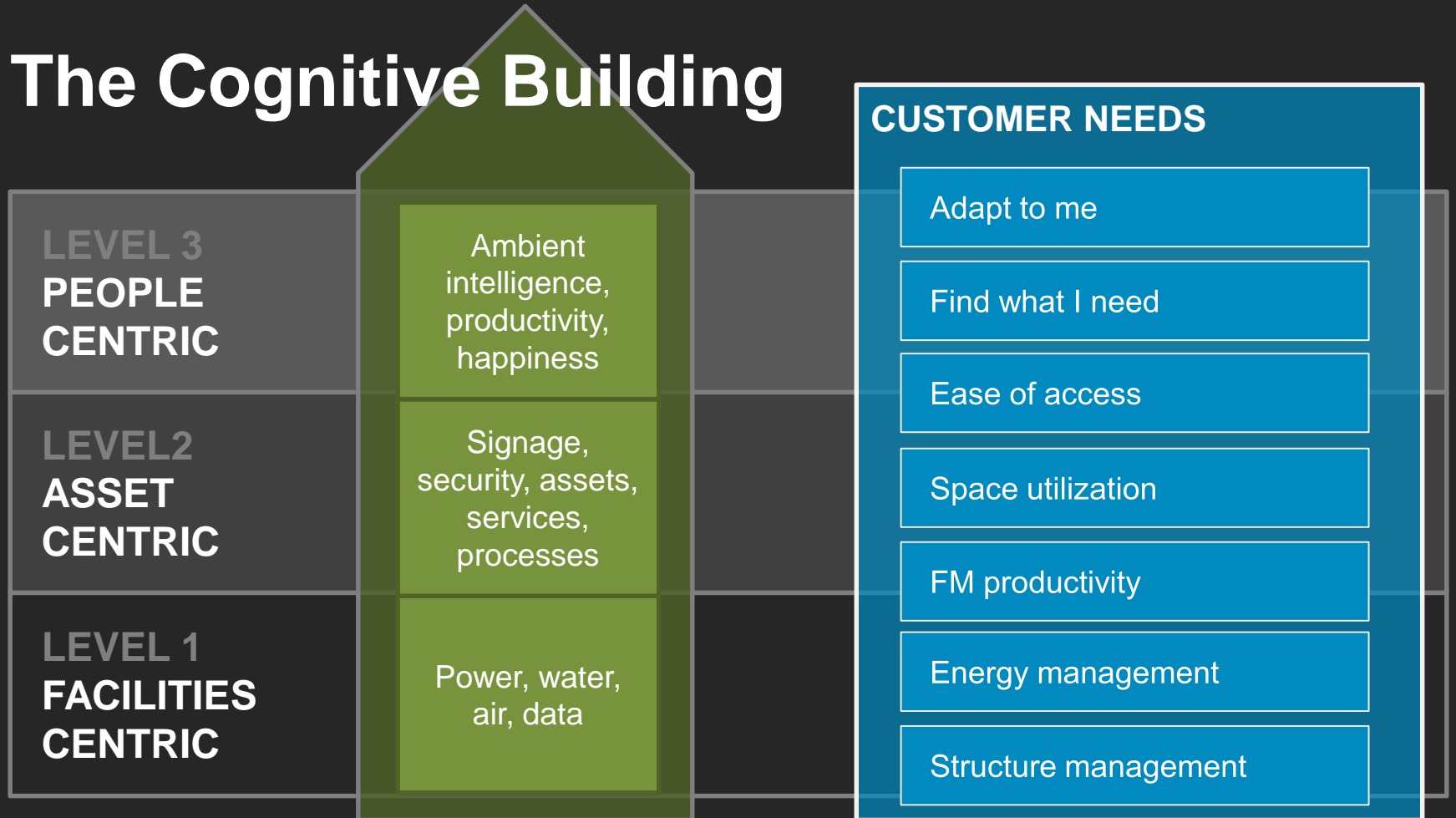
Employee productivity
increased up to **18%**
on average

65% of occupants willing to
help make their workplace
more environmentally
responsible.



Stewart Brand's 6 S's from How Buildings Learn

The Cognitive Building



KONE ELEVATORS



< CHINA

NETHERLANDS >

COPENHAGEN, DENMARK



LIVE FEED 

29-08-2017 | LOCAL TIME

KONE Elevator

13:04



Highly accurate landing on floor 10.

KONE Elevator

13:04



Floor 10. Doors open for 6.1 seconds.

KONE Elevator

13:04



Minimal sway while starting my way up.

13:04

KONE Cloud

Check.



13:04

KONE Cloud

Check.



13:04

KONE Cloud

Measured. Minimal.



REAL TIME CONVERSATION

CONVERSATION HIGHLIGHTS



WHIRLPOOL

Product > Service

GETTING HERE

- Multi-modal transportation services
- Alerts before leaving home
- "Please be aware that we are serving fish in the restaurant" (and you are allergic)
- Remember your umbrella
- Car sharing with colleagues
- Pre-book work area (and you might decide to work from home)
- Various work-from-home-services

Weather integration | Transport/city integration | Cognitive HR analytics | IoT integration | Tririga integration | MobileFirst

ARRIVING

- Walking around guidance
- Pay for your parking in-app (guest)
- Issue mobile parking ticket
- Provide alternative parking
- Find me a parking spot (before arriving)
- Find my car

MobileFirst | IoT integration (outdoor/camera) | Tririga integration | Maps 3D | Cognitive advisory services

ENTERING

- Access control
- The concierge knows you and can notify
- The building knows you and can advise/notify
- Alternative authentication means, e.g. combination of smartphone and biometrics, face recognition, smart watch + pincode/fingerprint etc.
- Information services - app based
- Counting, crowd and pattern analytics
- Video surveillance
- Anomaly video analytics (security)

Biometrics | IoT integration | Sensing | MobileFirst | Tririga integration | Video analytics | Video content management

WORKING HERE

- Locate my colleagues
- Who is in my working area today
- Status on infrastructure
- Find me an empty seat based on personal profile
- Optimise usage of office space
- Crowd and usage analytics

Indoor localization | IoT platform | Tririga integration | Cognitive Analytics | Big data analytics

DRINKING AND EATING

- Get today's menu at the restaurant
- How long is the queue right now?
- When is it optimal for me to eat?
- Nutritional information compared to personal health profile
- Order guest tickets
- Order takeaway based on preferences

Content management | IoT integration | Video surveillance | Partner integration | Cognitive

BEING HERE

- Get alerts and notifications on building app (smartphone or iWatch)
- Get around - office maps 2D/3D
- Order hot drinks
- Order light meal
- Check delivery situation on beverage machines
- Manage postal services via app and notifications
- Understand building usage and environment
- Align internal climate with outside
- Space management

MobileFirst | 2D/3D maps | IoT Platform | Legacy Integration | Tririga Integration | Video analytics | Big data analytics

MEETING WITH OTHERS

- Physical meeting room displays
- Reserve meeting room
- Arrange spontaneous meeting (lets meet in 4 minutes in the cafe)
- Conference support app
- Booked but unused meeting rooms
- Meeting room outages / defects

Tririga Integration | MobileFirst | Localisation services | Problem detection | Bookings

LEAVING

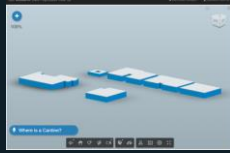
- Checking out
- Evaluating the day
- Find my car, bicycle or the path to the train station
- Heating the car
- Notifying the spouse

IoT Integration | Partner integration | IoT integration | MobileFirst

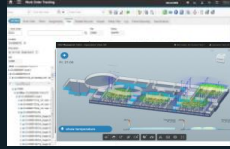
COGNITIVE BUILDING TOUCHPOINTS

The Composable Building

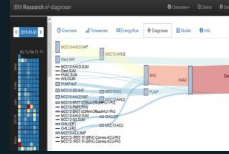
Cognitive analytics for deep insights to unlock new cost savings.



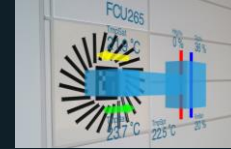
Navigate a campus via Watson speech



Manage and find your assets in 3D



Understand energy flow and diagnose anomalies with cognitive analytics



Easily monitor and maintain assets before they fail



Understand temperature, comfort and occupancy in buildings and data centers

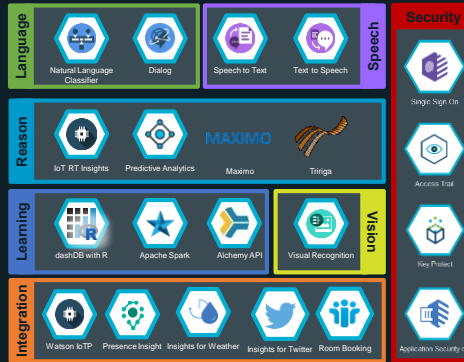
Customizable **IoT platform** that provides simple integration and high scalability

INTERACT

REASON

LEARN

INTEGRATE



Plug-and-play instrumentation with IoT devices



Vibration Data with IoT Sensors



Electricity with IoT Meter



Occupancy with PIR



Proximity with BLE



Desk Comfort Sensors



Rapid modelling with laser scanner

Home > Innovation

+Follow on my eWEEK

If These Walls Could Speak: IBM, Harman Powering Cognitive Rooms

By: Chris Preimesberger | April 19, 2017







 | (0) comments

In a meeting in which a question is asked and no one knows the answer, just ask the room itself, because it will dig up the answer for everybody within a few seconds.



The day is now here when people can gather inside a conference room for a meeting and not have to worry when someone asks a question to which no one knows the answer.

All someone will have to do is ask the room itself, because it will dig up the answer for everybody within a few seconds. The adage "if these walls could speak," is coming true in the most literal sense.

This is exactly what IBM Watson and several of its partners have done with its new Voice-Enabled Cognitive Rooms, starting with the first use case at Thomas Jefferson University Hospital in Philadelphia that was

announced April 19. Patients there now interact with in-room speakers that are connected to the IBM Watson IoT Platform and can easily control their in-room subsystems (windows, lights, temperature settings) without having to physically perform any manual tasks or try to figure out new systems.

For conference rooms, IBM's cognitive intelligence apps are embedded into Harman microphone soundbars and alarm clocks with other form factors being developed, so that users can interact by using natural language. Consumers can simply ask questions or issue commands with their voice when in a room. These requests are then sent to the Watson cloud and Watson IoT services, which work with Harman's technology to allow people to obtain information or other kinds of help in getting tasks done.

Further reading

[AT&T to Fight DOJ Opposition to Time Warner Merger](#)

[Volvo, Uber Will Provide Thousands of Autonomous Cars](#)

Order Up a Videoconference, and the Room Does It

For example, now when an employee enters a conference room, he or she can start a video conference, launch a presentation and do other tasks using voice only. In the future, these tasks will be executed automatically based on what the system has learned about the employee based on previous meetings. Thus, the system gets smarter about the person and



Subscribe to
eWEEK Editor's Pick

Enter Email Address

GO >

Or [Log In](#)
[Click for more newsletters](#)

Editor's Choice



By: Pedro Hernandez | November 22, 2017







Microsoft's Cloud Rolls Out Red Carpet for VMware Workloads







Dome9 Unveils Magellan for Context-Aware Cloud Security








30-06-2016

ISS Turns to IBM Watson IoT to put the 'Human Touch' into buildings

Global leader in facility services taps insight from sensors and devices to create better, happier buildings.

ISS, a leading global provider of facility services, has signed a commercial agreement with IBM to use the power of Watson IoT to transform the management of over 25,000 buildings around the world.

Headquartered in Copenhagen, ISS is one of the world's largest private employers with over half a million staff managing everything from concierge to cleaning, catering to technical maintenance for thousands of high profile clients including Rolls-Royce, Nordea, Novartis, and Royal Air Force in the UK.

Through the new agreement, ISS will tap IBM's Watson IoT platform, consulting and advanced facilities management technologies to transform the services it provides to building owners and users around the world with the goal of making buildings more personalized, intuitive and user-friendly.

Working with IBM, ISS will integrate and analyse data from millions of devices and sensors embedded into buildings including doors, windows, chairs, meeting rooms, dispensers and air conditioning systems. Data will be uploaded onto IBM's Watson IoT cloud platform and cognitive computing technologies will learn from this data helping ISS optimise its services as well as furthering its understanding of how people use buildings, thereby creating new opportunities for innovation.





28061

FACIAL RECOGNITION SYSTEM

RECEPTION



IDXXX-XX-2988
Mathias Black
AGE 36

COFFEE	YES
MEETING	09:00
LUNCH	12:00

TIME 08:55



PEOPLE COUNT

202

OCCUPANCY LEVEL

61,3




RECEPTIONIST


ANJANINE
LØNSTRUP

```
10:00:00 [INFO] System started successfully.
10:00:01 [INFO] Loading configuration from /etc/facerec.conf.
10:00:02 [INFO] Database connection established.
10:00:03 [INFO] Facial recognition module initialized.
10:00:04 [INFO] Receptionist login successful: ANJANINE LØNSTRUP.
10:00:05 [INFO] Current occupancy level: 61.3.
10:00:06 [INFO] Meeting schedule loaded.
10:00:07 [INFO] Coffee service status: YES.
10:00:08 [INFO] Lunch service status: 12:00.
10:00:09 [INFO] Time: 08:55.
10:00:10 [INFO] User ID: IDXXX-XX-2988.
10:00:11 [INFO] Mathias Black recognized.
10:00:12 [INFO] Anjanine Lønstrup recognized.
10:00:13 [INFO] People count: 202.
10:00:14 [INFO] System running smoothly.
```


 NOISE LEVEL 41,64 dba

 LUMENS: 444

 REMAINING GUESTS 20

 CO₂ LEVEL: 413

 PLATES LEFT 65

 TEMPERATURE 22,2°

CONCIERGE //

Rate your Experience
in the Canteen

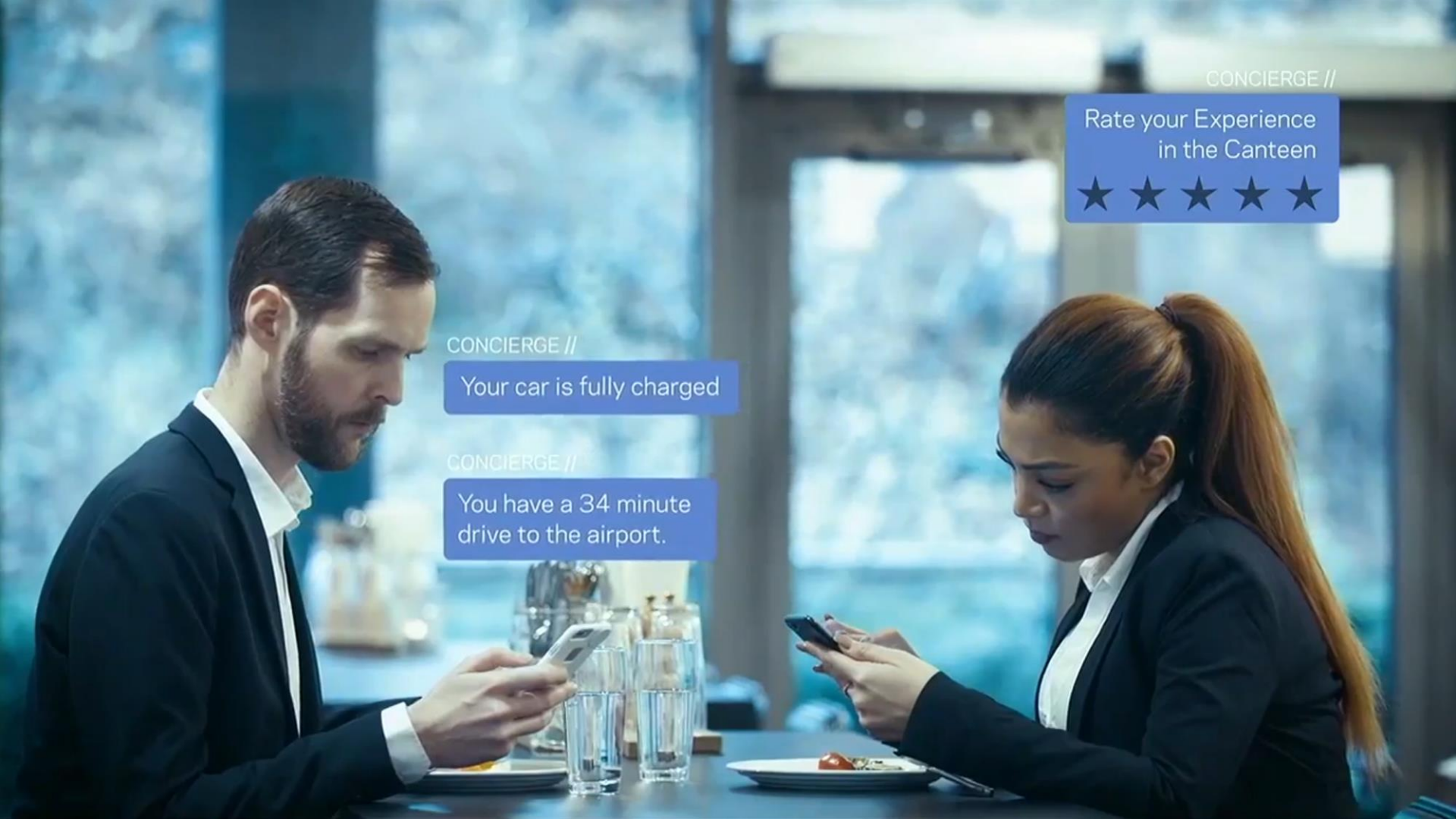


CONCIERGE //

Your car is fully charged

CONCIERGE //

You have a 34 minute
drive to the airport.





TEMPERATURE 21,5°C

In ISS we **LEAD** by example.



TEMPERATURE 23,5°C



TEMPERATURE 22,2°C



1. Hvor er teknologien på vej hen?
2. Hvad kan vi lære af bygningen?
- 3. Hvordan bliver hjemmet smart?**

The Internet of ransomware things...

HUNGRY? PAY UP AND I'LL UNLOCK MY DOOR!

ON STRIKE UNTIL YOU SEND MONEY TO MY HACKERS.

20 BUCKS IN MY PAYPAL ACCOUNT OR I'LL ONLY BREW DECAF!

I'LL BE BURNING THE TOAST IF YOU DON'T GET ME SOME DOUGH!

THE NEXT TIME YOU LEAVE, IT'LL COST YOU 100 BUCKS TO GET BACK INTO THE HOUSE, UNLESS YOU GIVE ME \$75 NOW!

30 BUCKS IN BITCOIN, OR NEXT TIME I SMELL SMOKE, I MIGHT JUST LET YOU SLEEP.

MY ALARM SYSTEM IS GOING TO GO OFF RANDOMLY THROUGHOUT THE NIGHT, UNLESS YOU "DONATE".

YOUR DIRTY DISHES CAN WAIT, I'M BUSY MINING BITCOINS.

EXCUSE US WHILE WE PARTICIPATE IN A DDOS ATTACK.

I'M TURNING OFF THE HEAT UNTIL YOU WARM UP MY BANK ACCOUNT!

WIRE MY HACKER \$100 OR I'LL REVERSE MY MOTOR AND BLOW DIRT ALL OVER THIS PLACE!

IF YOU DON'T SEND US CASH, YOUR REPUTATION WILL BE IN THE TRASH.

I'LL START YOUR CAR, BUT ONLY TO TAKE YOU TO YOUR BANK TO MAKE A TRANSFER.

SEND ME \$25 OR I'LL TELL EVERYONE ON YOUR SOCIAL NETWORK THAT YOU WERE STUPID ENOUGH TO BUY AN INTERNET-CONNECTED BROOM!



Tweets 4,013 Following 154 Followers 252K Likes 3,218 Moments 2

Follow

Internet of Shit

@internetofshit

whatever, put a chip in it. say hello:
internetofshit@gmail.com

In your stuff

facebook.com/internetofshit

Joined July 2015

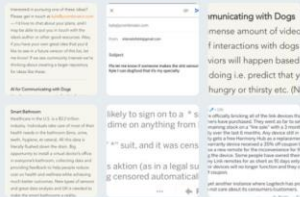
Tweet to

Message

124 Followers you know



1,023 Photos and videos



Tweets Tweets & replies Media

Internet of Shit Retweeted
Owen @ow · Nov 21
why do all WiFi modems look like alien Invaders



67 208 746

Internet of Shit @internetofshit · Nov 21
Time to delete my account

Internet of Shit @internetofshit
Ycombinator would like to give you cash to put your toilet on line

Who to follow · Refresh · View all

Followed by Leigh Cook and others

Futures Sandbox @future...
Follow

Followed by PPadbury and others

Erduna @futura_erd
Follow

Followed by Benedicte Ström and others

Maiken Vibe Elmbaek @...
Follow

Find people you know

Trends for you · Change

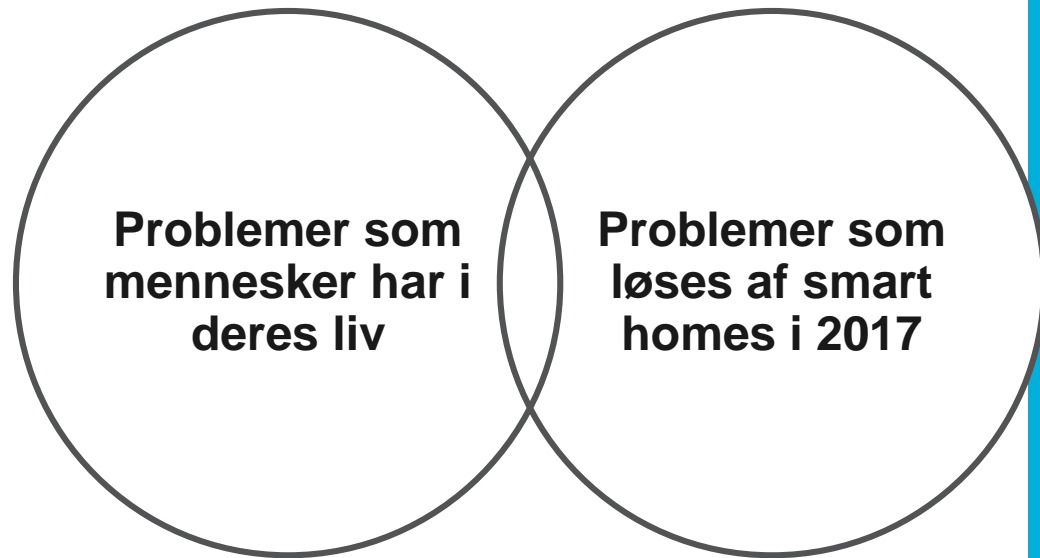
#kv17
@HoffmannAnja is Tweeting about this

#ÅretsLeder17
@nicolaj_com, @danmark50 and 1 more are
Tweeting about this

#shipping
1,594 Tweets

#SDGs
@HoffmannAnja is Tweeting about this

#dkforsk
@HumanomicsMap and @HoffmannAnja are



- Ikke-sammenhængende produkter
- Gigantiske problemer med sikkerhed
- Ofte afhængighed af smartphones
- Få standarder
- Forskelligartet design

Men... kan vi gøre det rigtigt, og i fællesskab definere standarder, vil den digitale bolig

- Være en sammenhængende oplevelse
- Tænke foran og forstå os
- Skabe sundhed og godt miljø
- Være bæredygtig

Kim Escherich
escherich@dk.ibm.com
+45 2880 4733
internetofthings.dk



@kescherich | @danmark50



/in/escherich

